

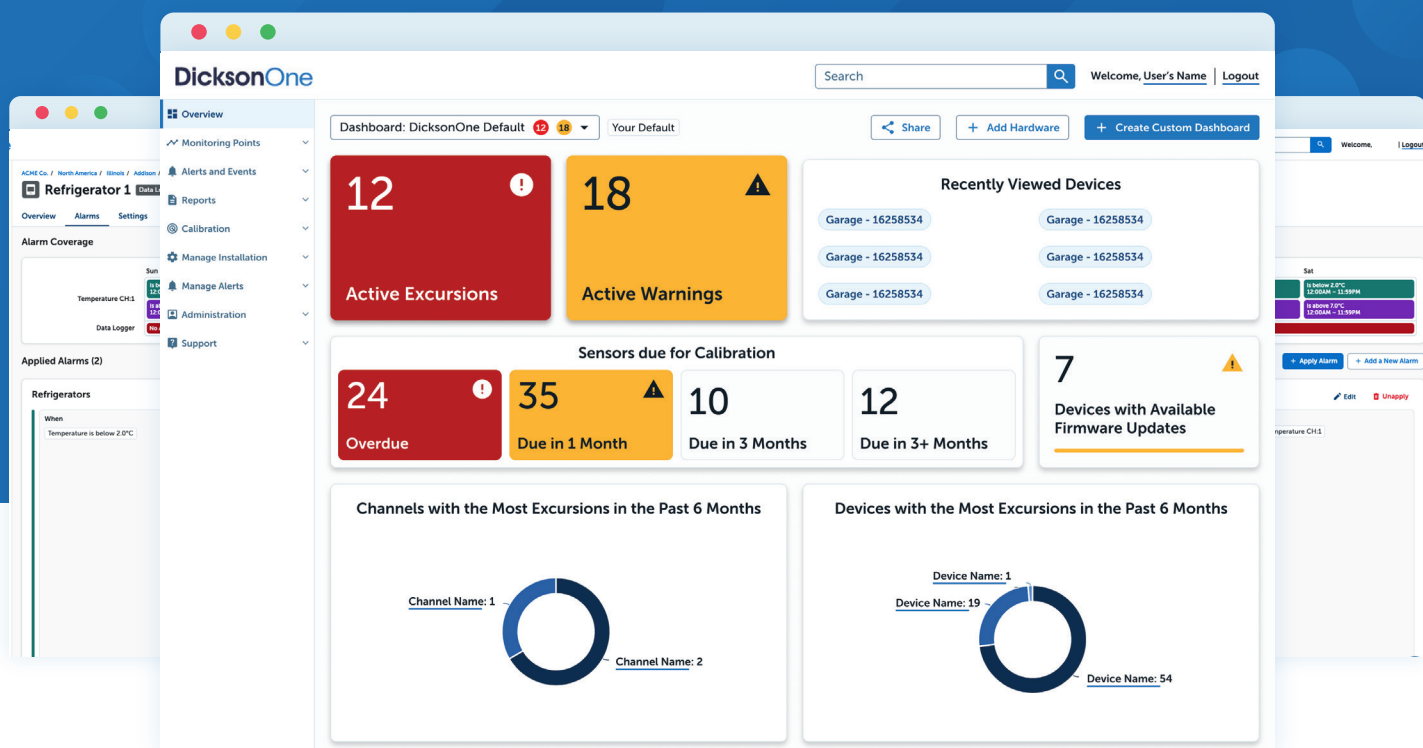
DicksonOne

The Complete Environmental Monitoring Solution



Powerful Monitoring From a Single Centralized Location

DicksonOne provides simple, centralized, around-the-clock environmental monitoring that gives instant visibility into the entire scope of your monitoring operation, improving safety, and reducing the burden on your staff.



Any Time, Any Platform

Cloud-based application allows for 24/7 monitoring from a computer, tablet, or smartphone



Global Monitoring

Monitor hundreds of sites globally, enforce SOPs centrally and consistently



Intelligent Access

Granular permissions let you control who has access to what information



Reduced Staff Burden

Free staff from conducting time-consuming device checks

Built With Compliance in Mind

Backed by more than a century of organizational expertise, DicksonOne was created with regulatory compliance in mind, giving your business a reliable, powerful tool to safeguard its assets and avoid potentially costly excursions.



Highest Standards

Designed to meet the rigorous safety standards found in heavily regulated environments like healthcare, pharmaceuticals, biotech, medical devices, food, aerospace and many others



Fast Compliance Updates

When regulations change, DicksonOne easily updates to reflect new compliance standards, helping you remain compliant simply and efficiently



Scalability For Enterprise Growth

Whether you're starting with a single freezer or a global network of facilities, DicksonOne is built with enterprise growth in mind, with the ability to scale quickly as your organization evolves.

✓ Manage Devices Centrally

Global settings that propagate downward allow you to manage thousands of devices at once

✓ Bulk Configuration

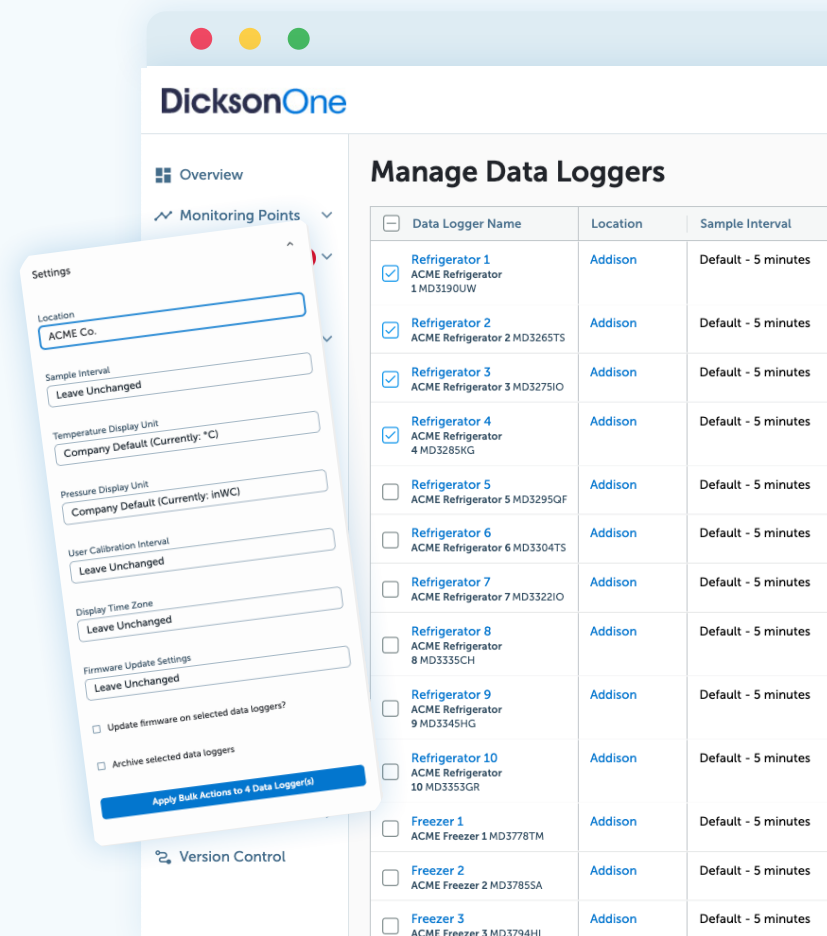
Configure devices in bulk from a central location using tables that let you filter easily to exactly what you're looking for

✓ Easy Updates

Over-the-air firmware updates allow you to stay up-to-date efficiently over a large scale

✓ International Certification

Loggers certified to operate in many regions worldwide



Robust Reporting to Conveniently Deliver the Data You Need

DicksonOne conveniently compiles thorough, digestible reports for you as frequently as you require, making it simple to stay on top of your operation and locate data when you need it.



Automated Reporting

Automated report delivery lets you schedule reports at the frequency that makes sense for you



On-demand Data

Easily pull one-off reports for audit responses or on-demand needs



Easy Exports

Quickly export data to CSV file for further analysis

Device Report - Entire Array
iFi - RTMP - 60 - 16232758
Showing at 15min resolution
09/01/2023 - 09/30/2023
Monthly on 1st
Minimum: 26.9°C

DicksonOne
Incubator 1 - MD4244JA
03/01/2024 - 03/06/2024
Lab Incubator

Incubator 1 - MD4244JA
Showing at 15min resolution

Channel	Average	Minimum	Maximum	Mean Kinetic Temp
Temperature CH:1	23.0°C	16.8°C	29.3°C	23.5°C
Relative Humidity CH:2	51.0%RH	28.2%RH	73.6%RH	N/A
CO Level CH:3	3.5%CO	1.0%CO	6.0%CO	N/A

Excursion: Temperature CH:1 Is Below 37.8°C
Triggered 10/10/2023 08:50:45 AM CDT
Duration Active alarm
Comments 0

Annotation At	Channel	Comment
There were no annotations for this time period		

Daily Summary - Channel (17324) & (17325)

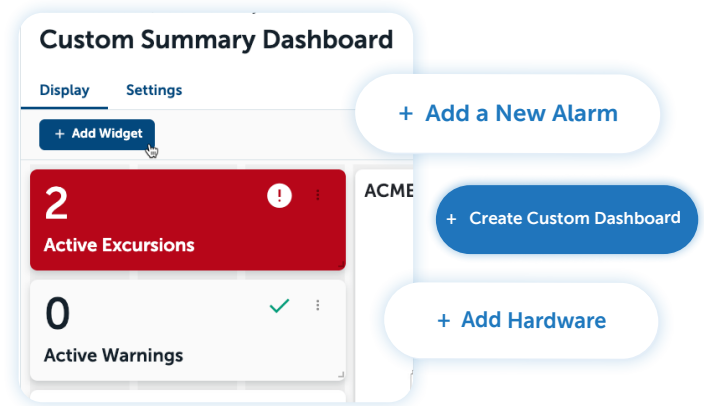
	03/01/2024		03/02/2024		03/03/2024		03/04/2024		03/05/2024		03/06/2024	
	17324	17325	17324	17325	17324	17325	17324	17325	17324	17325	17324	17325
avg	23.1°C	51.7%RH	23.1°C	50.6%RH	23.1°C	51.7%RH	23.1°C	51.7%RH	23.1°C	50.6%RH	22.9°C	50.9%RH
min	16.8°C	28.8%RH	16.9°C	28.5%RH	16.8°C	28.8%RH	16.8°C	28.8%RH	16.9°C	28.5%RH	16.8°C	28.2%RH
max	29.3°C	73.6%RH	29.2°C	72.9%RH	29.3°C	73.6%RH	29.3°C	73.6%RH	29.2°C	72.9%RH	29.3°C	73.6%RH

03/06/2024
Demo Report
Mean Kinetic Temp: 4.7°C

Phone: 1-800-757-3747 Fax: 1-800-676-0498 Email: support@dicksonone.com
For calls outside the US please call 1-800-757-3747

Ease of Use Creates Seamless Experience

DicksonOne was designed to make the end user's life easier, not just because it provides a better experience, but because of the peace of mind it provides knowing the system is working as it should and doing what you've asked it to do.



Intuitive Design

Easy-to-navigate interface offers flexible views, custom dashboards, and intuitive alarm configuration



Smart Alerts

System intelligently calls attention to data that merits the right people's attention



Simple Setup

New devices set up in minutes, not hours, getting you up and running quickly

Real-time alerts notify the *right people* at the *right time* and give you the opportunity to *prevent losses*.

Intelligent Alarms Provide Peace of Mind

When your monitoring system detects something isn't right, every second counts. DicksonOne's robust alarm capabilities make sure to notify the right people, in the right manner, at the right time, reducing risks and protecting your assets.

✓ Flexible Configuration

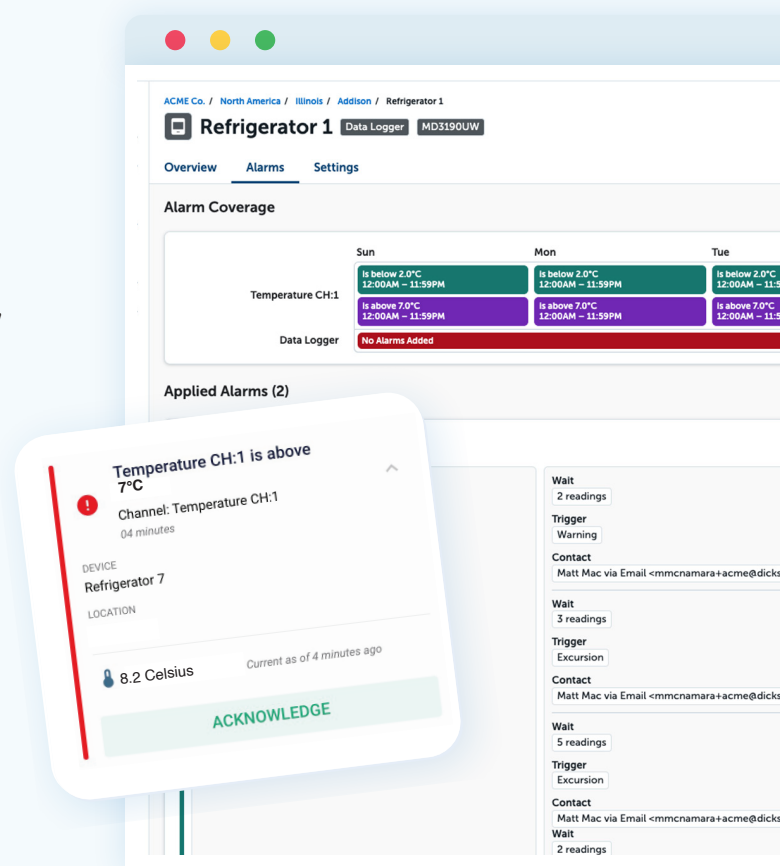
Configure your alarms in the way that best suits your organization, setting your parameters and the personnel who should receive alerts, which can be sent via SMS, phone, and email, as well as audible alarms

✓ Notify the Right People

Intelligent alarms know who is able to respond fastest to an excursion and notifies them

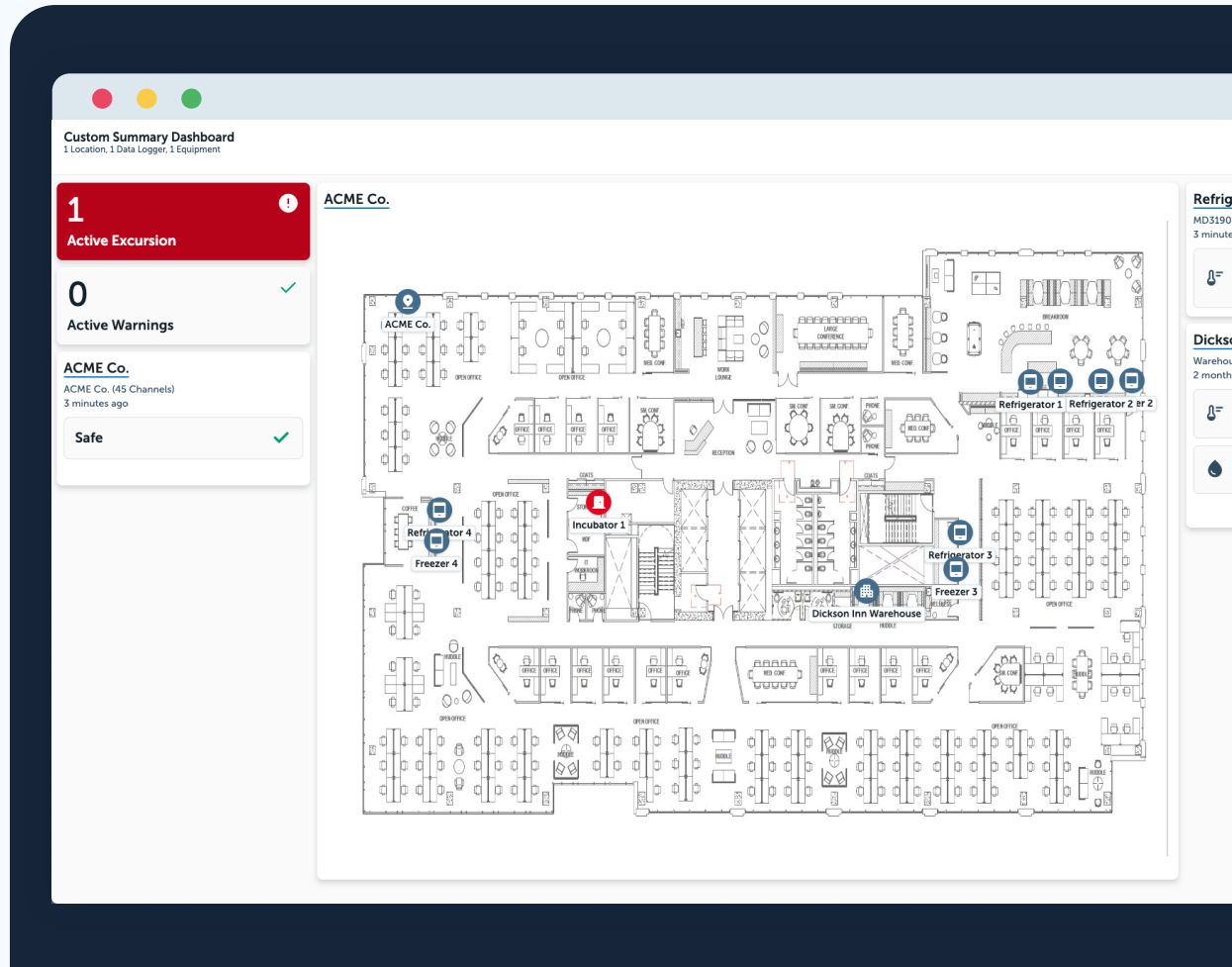
✓ Easy Templates

Alarm templates allow you to easily apply alarm conditions and notifications to multiple devices at once



Clear Data Visualizations At Your Facility

DicksonOne makes it simple to access and digest your data with a variety of visualizations that help you see the big picture and make better decisions.



Custom Dashboards

Option to display a dashboard in your facility and customize your dashboards to elevate the data you need most

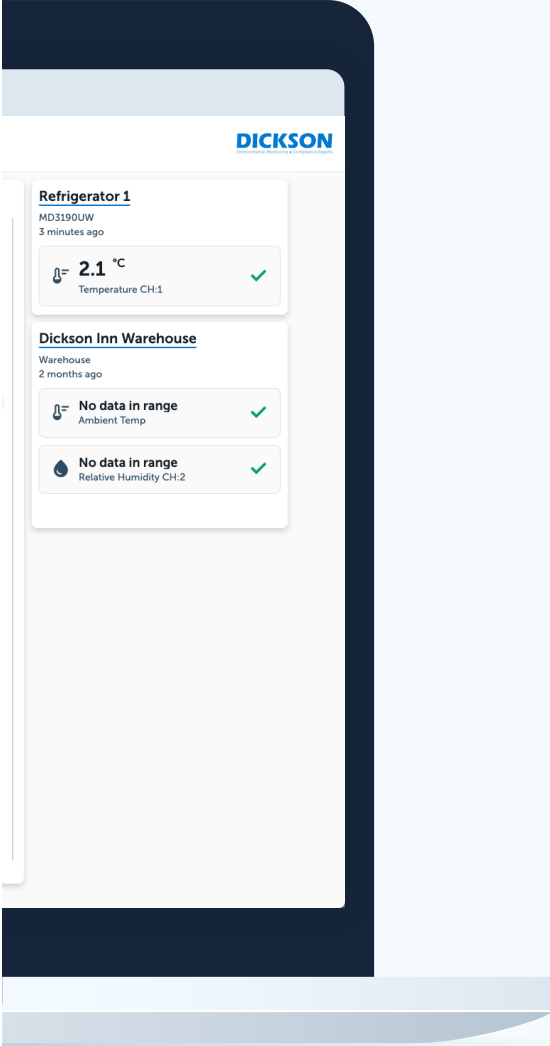


Display Options

Easily toggle between monitoring point models to view your monitoring data in a way that works for your operation

Fingertips

With a variety of data
better decisions.



Floor Plan Views

View monitoring points and data within the context of your actual floor plan for easy viewing and added clarity

Flexibility to Fit Your Needs

Environmental monitoring circumstances vary widely across organizations, and DicksonOne comes with the flexibility to meet different monitoring challenges head-on.

✓ Variety of Applications

Conduct monitoring across multiple applications, including temperature, humidity, differential pressure, open/close, voltage, CO₂, and more



Temperature



Humidity



Differential Pressure



Universal



Open/Close



Voltage



CO₂



4-20 mA

✓ Connectivity Options

Devices can communicate via WiFi, LoRa, and ethernet, allowing DicksonOne to function across a variety of connectivity environments



Ethernet



WiFi



LoRaWAN



Bluetooth



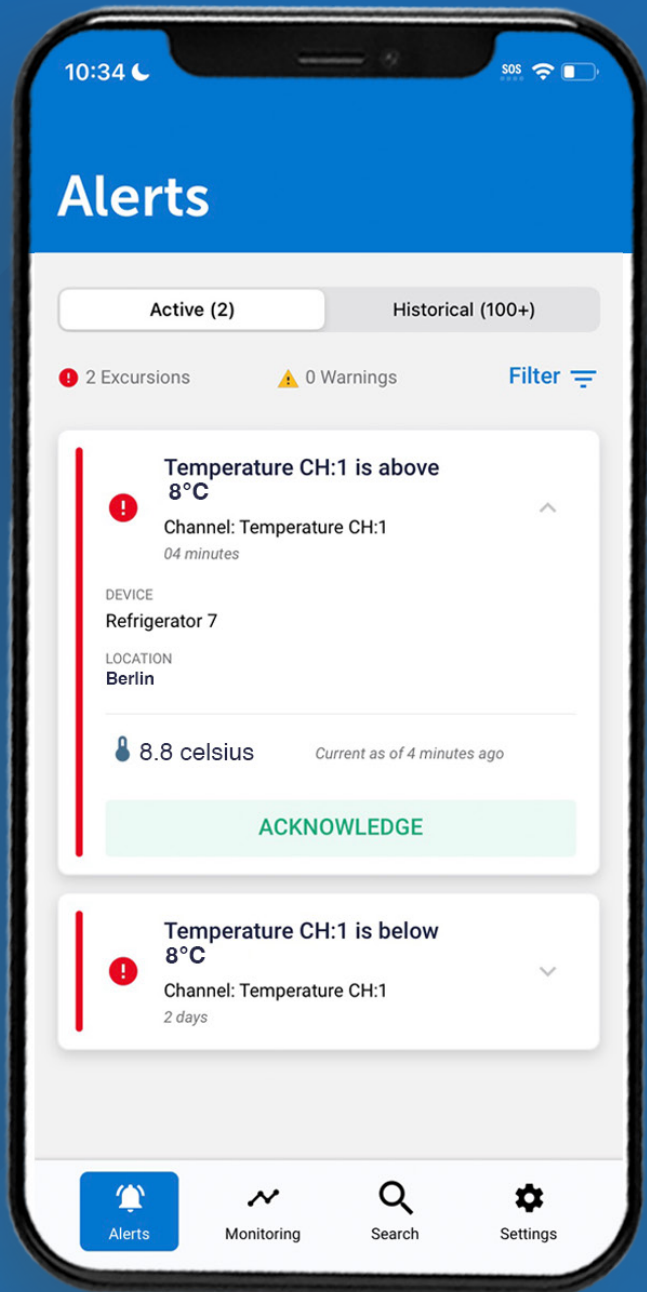
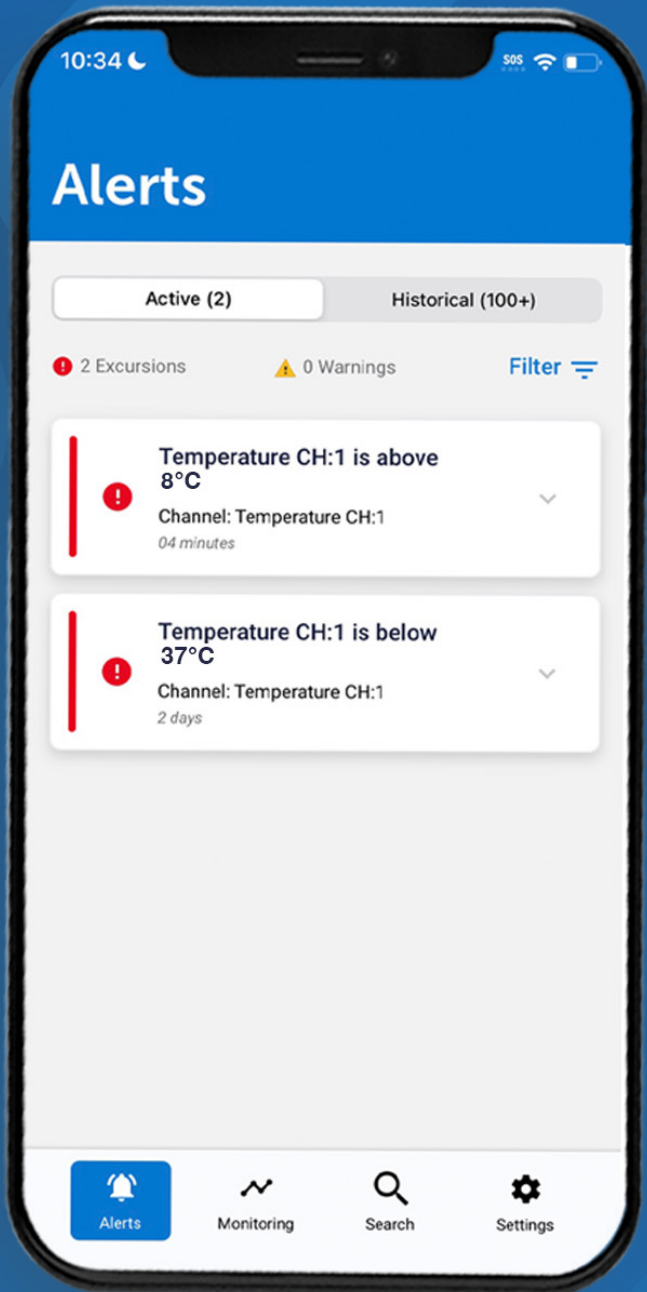
Cellular

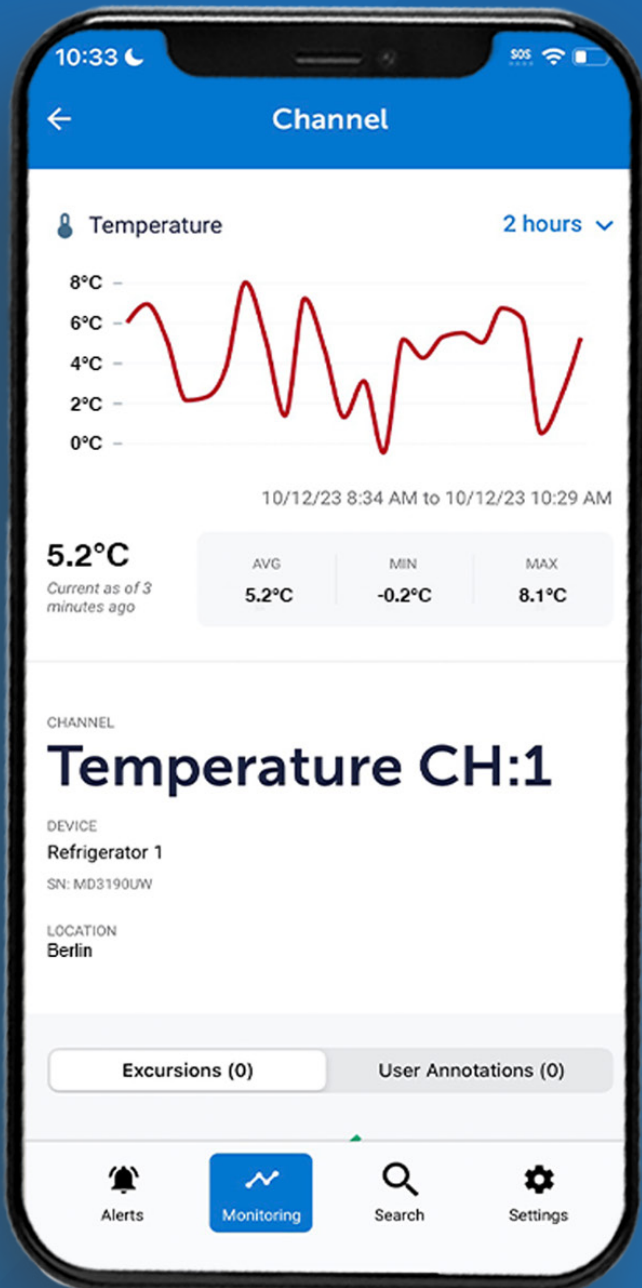
✓ Easy Calibration

Replaceable Sensors™ allow you to quickly recalibrate without replacing devices, keeping you efficient and nimble



Replaceable Sensors





Mobile App for Monitoring On-the-Go

Our mobile app gives you access to DicksonOne's monitoring capabilities whether you're traveling abroad or in bed at 2am.



Access Anywhere

View and respond to alerts immediately from your mobile device



Data on the Go

Easily view historical data remotely

Integrate Directly With the Technology You Already Use

DicksonOne can integrate directly with the systems and technologies your organization already uses via its public REST API, making it even more efficient to deploy across your operation, including:

- ✓ Quality Management Systems (QMS)
- ✓ Business Intelligence (BI)/Dashboarding Tools
- ✓ Data Lakes
- ✓ Custom applications

```

{
  "data": {
    "id": 13,
    "description": "Temperature CH:6 is a",
    "type": "high_low",
    "escalation_started_at": "2023-11-07T",
    "entered_at": "2023-11-07T23:36:57.00",
    "normal_at": null,
    "comment": "2023-11-08T00:36:57.000Z",
    "acknowledger": {
      "id": 9,
      "email": "ricardo_corwin@bechtelar-davis.test",
      "full_name": "Ricardo Corwin",
      "first_name": "Ricardo",
      "last_name": "Corwin",
      "current_login_at": "2023-11-07T23:36:57.000Z",
      "last_login_at": "2023-11-07T00:36:57.000Z",
      "last_request_at": "2023-11-08T00:36:57.000Z",
      "time_zone": "America/Chicago",
    }
  }
}

```

Name	Description
id	The unique identifier for this Alert record.
description	The condition which resulted in the alert.
severity	The severity of alert. Either <code>warning</code> or <code>excursion</code> .
type	The type of alert. Either <code>not_reporting</code> or <code>high_low</code> .
escalation_started_at	An ISO-8601 timestamp representing the time that DicksonOne began monitoring the alert.
entered_at	An ISO-8601 timestamp representing the time that DicksonOne initially sent notifications for the alert.
excursion_at	An ISO-8601 timestamp representing the time that the alert was

Code	Description
301	The request was made via HTTP, rather than HTTPS. You will need to attempt your request again using SSL.
400	The request's format was invalid. This can be triggered by invalid pagination parameters.
401	No API token was supplied, or the supplied API token was invalid.
403	The user authenticated by the API token is not permitted to perform the requested action.
404	The requested record wasn't found.
409	Your request caused a conflict with existing data. Review the list of error messages to determine how to resolve the error.



Serious About Security

In today's digital environment, security has to be top of mind, constantly. Dickson employs industry best practices to keep our systems up-to-date and our customers' information safe.

Implementation, Training, and Support

Our team of experts is there to provide whatever level of assistance you need to get started with DicksonOne, and available for continued support along the way.



Flexible Implementation

Our flexible setup model allows for everything from self-installation using our step-by-step guides to a completely turnkey process where we handle everything, along with hybrid options for those seeking something in between



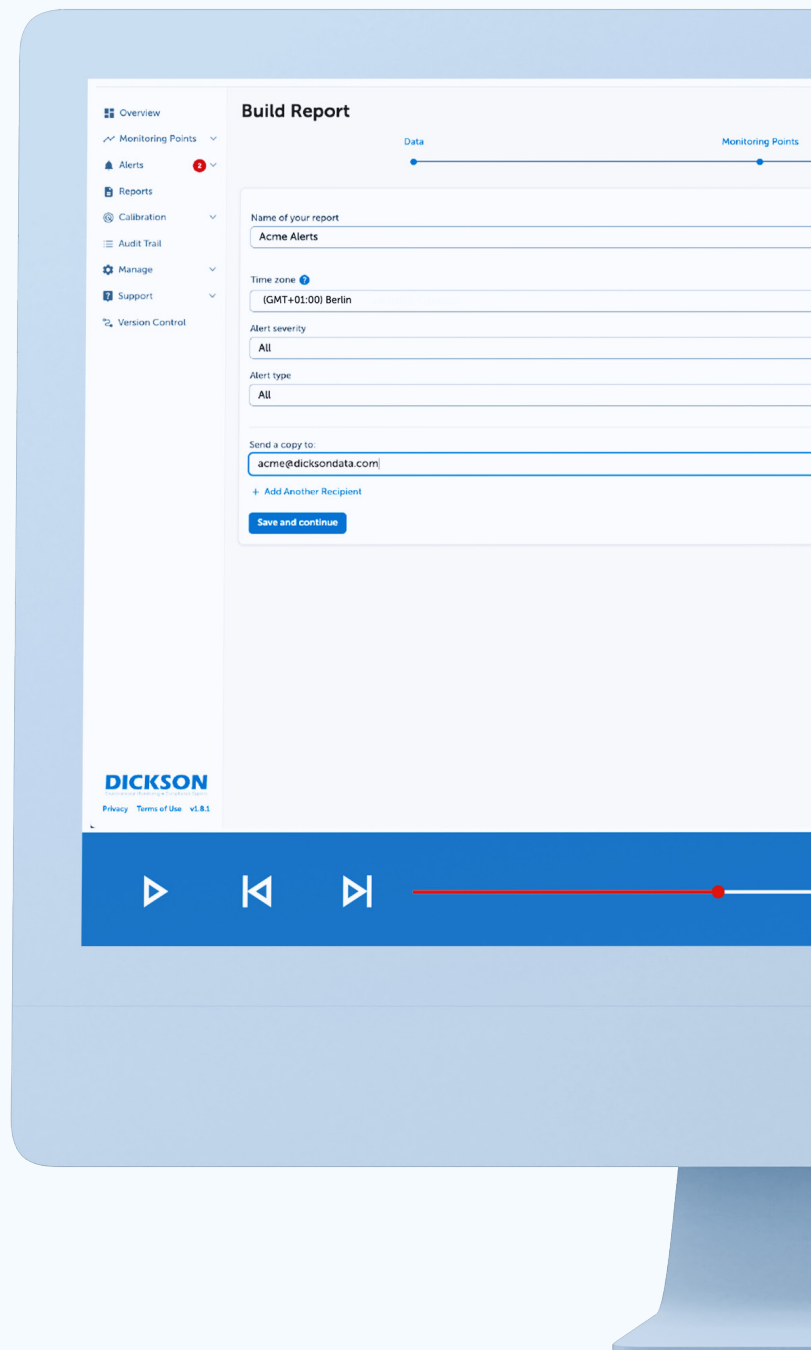
Effective Training

Customized trainings are available to get your key personnel acclimated quickly



Reliable Support

Every user gets email, chat, and phone support, but optional 24/7 support gives you access to Dickson experts around-the-clock for the most critical applications



Secure Authentications

Single sign-on (SSO) capabilities via SAML 2.0 manages authentications securely



Best Practices

Devices comply with IoT security best practices



Tested Annually

Yearly penetration testing to keep pace with evolving security climate

DICKSON
Environmental Monitoring + Compliance Experts

© 2024 Dickson. All rights reserved.
Non-contractual document. Specifications
and product photos subject to change
without notice.

DicksonData.com

■ Dickson Europe
Montpellier - France
+33 (0)4 99 13 67 30
contact@dicksondata.fr



**don whitley
scientific**
culturing innovation

Approved Dickson Partner

■ Don Whitley Scientific
United Kingdom
+44 (0) 1274 595728
sales@dwscientific.co.uk

